

CROWN

RC 5700 SERIES



Built for Work Designed for You

The Crown RC 5700 Series takes on hard jobs and tough conditions. But inside its compact, stand-up design, it's built to make your job easier. The overall comfort, outstanding visibility, and intuitive controls for the RC 5700 Series help your operators handle virtually any task with ease.

**The Crown RC 5700 Series:
Raising the Standard.**



Visit crown.com

See the RC 5700 Series





Versatility

From rugged dock plates to tight spaces, in high heat and bitter cold, the RC 5700 Series is flexible enough to handle virtually any job.

Visibility

Excellent visibility in every direction—overhead, through the mast and over the forks—improves operator productivity and safety.

Comfort & Safety

Exceptional operator comfort and Crown's Intrinsic Stability System™ inspire operator confidence to get more done.

Reliability

Built for the long haul, the RC 5700 Series requires less maintenance while delivering long-lasting performance, lowering your total cost of ownership.



Versatility

Winning Performance for Many Tasks

The Crown RC 5700 Series is one of the most flexible counterbalance lift trucks in the industry, whether unloading trailers at the dock, transporting products across the warehouse, or performing replenishment and retrieval tasks.

Navigating in tight spaces like trailers, narrow aisles, or drive-in racks is made easier with the RC 5700 Series' exceptional visibility and an intuitive multifunction control handle. Crown designed it to handle extreme temperature changes, performing in the heat and the cold around the clock. Plus, a full range of attachment options enables the RC 5700 Series to handle loads, with or without pallets. It's a true multi-tasking lift truck for many applications.



Cold Storage



Drive-in Rack



Palletless Load Handling



Visibility

See More Do More

The RC 5700 Series delivers visibility where it counts most—in trailers, on the docks, in narrow aisles and around congested areas.

The low-profile cowl and sculpted power unit, coupled with the mast, pillar and overhead guard design, leverage the operator's side-stance positioning to provide enhanced visibility with less effort.



Angled pillar design enhances visibility from the operator's viewpoint.

Fork tip indicators simplify pallet entry, saving time with every move.

Orange fender indicator highlights right side positioning in tight spaces.

Sculpted power unit opens the line of sight to provide the operator with a wide field of vision for increased productivity.

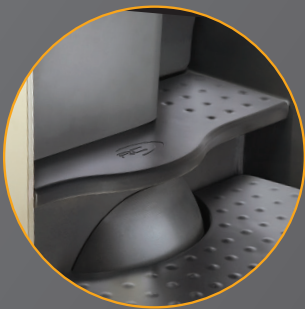


Right Fit for the Productive Operator

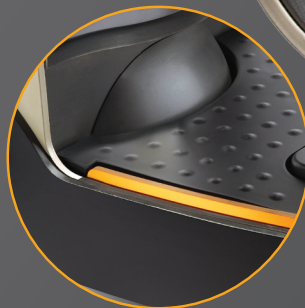
With the RC 5700 Series, operators are positioned for productivity, with comfort and control that exceeds expectations. Operator compartment design and usability features combine to provide operators with more flexibility to see, work and move in congested areas while enhancing safety, comfort and productivity.



Workspace – serves as a convenient desktop-on-the-go for the operator, complete with a flat surface and a document clip.



Footrest – provides postural relief during stationary tasks, complementing the largest floorboard in its class.



Entry Bar® Safety Switch – helps to improve operator safety by working in combination with the brake and presence pedal. If an operator places a foot on the entry bar switch, the lift truck automatically slows down and sounds an audible alarm.

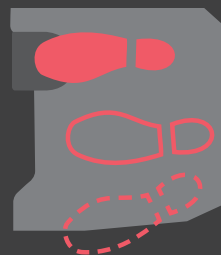




Multi-task Control Handle – features a comfortable grip and allows operators to blend functions.



Backrest/Hip Pad – enhances operator comfort while providing flexibility to reposition throughout the shift, hugging the body with contoured padding.



Brake and Presence Pedal – promotes safe operation with a dual-pedal design that discourages operators from using only one foot to operate the truck. Protects both the truck and the operator by automatically applying the brake when the operator's left foot is removed from the brake pedal. The roomier cabin and ability to adjust the position of the feet provide postural relief during travel.

Next page:
Enhanced comfort features – FlexRide™ Floorboard and Adjustable Armrest

Comfort

A Lift Truck That Adjusts to You

Crown's extraordinary ergonomic design helps operators stay focused and in control, boosting productivity by increasing comfort and reducing fatigue.

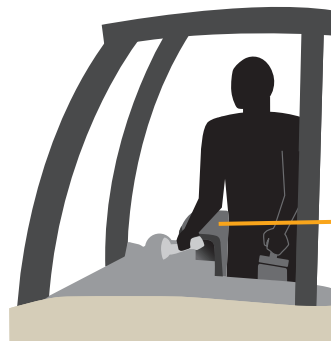
Variable side stance, a Crown innovation that became an industry standard, provides five solid points of contact for secure operator positioning while reducing constant twisting and turning.

Step height is strategically designed low enough to make frequent on/off tasks easy, yet high enough to prevent pallet truck forks from entering the operator compartment.



FLEXRIDE™

FlexRide Suspension offers shock and vibration protection beyond the typical self-adjusting floor designed for an average size operator. FlexRide's weight adjustment feature allows the suspension to be customized for operators of different sizes.



Armrest Adjustability of up to 6" accommodates operator height, providing padded, postural positioning and support that reduces fatigue. Typical armrests make the operator adjust to the truck.

Safety

A Smart Approach to Stability



Crown's proactive system technologies are designed to improve operator safety in real-world applications, boosting productivity and confidence.

The Crown Intrinsic Stability System is engineered to address the causes of unstable conditions. This complements safe, efficient operating practices that build the operator's confidence, rather than test it.

- **System-controlled hydraulic speeds**
The hydraulic system automatically limits tilt and side-shift speed to increase vehicle stability and operator confidence.
- **Travel speed control**
The RC 5700 Series automatically limits travel speeds and braking based on fork height and other operating conditions.
- **Tilt interlock**
When forks and mast are tilted more than two degrees forward, a tilt interlock helps keep forks from raising above free lift. More tilt at higher levels could tip the lift truck.
- **Stability-enhanced counterweight**
Crown lift truck testing uses real-world forces to enhance product design. The RC 5700 Series packs a stability-enhancing counterweight into a compact, space-saving design.



- **Cornering speed control**
The RC 5700 Series knows the direction of travel, angle of steer wheels and speed of the lift truck. It uses this information to automatically limit travel speed in turns.
- **Ramp speed control**
The intelligent control system maintains the lift truck at a constant speed on a ramp, so it won't gain or lose momentum. It also automatically holds a lift truck stopped on an incline until the operator initiates forward or reverse travel.



Reliability

The Power of Uptime

Access123™ Comprehensive System Control

Access 123® Comprehensive System Control makes Crown lift trucks smarter, sharing real-time information from traction, braking, steering, hydraulics and other functions.

This built-in system, used in other electric Crown lift trucks, increases technician proficiency and increases performance, resulting in significant savings in service time and costs. Technicians can use Access 123 to turn individual components on or off, obtain voltage readings and perform precise calibrations.



eGEN® Braking gives you an edge in performance, service and cost of ownership by eliminating traditional friction brakes.

- Automatic parking brake — the only friction point; engages only when truck is stopped; no friction, no wear
- Consistent brake feel for operator
- Comprehensive two-year warranty





Crown's Proven **Support Network**

Crown support begins long before a lift truck leaves the factory. Our integrated approach to service provides a time-tested user experience to our customers—before, during and after the sale.



Safety and Training

Our comprehensive training programs for operators, supervisors, technicians—and even pedestrians—can help support your efforts to provide a safe and productive work environment. Our DP TrainSafe™ Train-the-Trainer program offered locally can provide your organization with tools to efficiently train new operators using your own resources. At our Regional Training Centers, Demonstrated Performance Service Technician Training goes above and beyond traditional classroom training, allowing participants to work on lift trucks with instructor supervision.



Forklift Maintenance and Repair

Crown's Integrity Service System™ keeps your forklifts running—regardless of brand. From time and material to complete maintenance, our Integrity Service System offers a variety of service plans to suit your needs in an efficient and cost-effective way. Our well-stocked, GPS-dispatched service vans help ensure your service technician arrives with the right part at the right time.



Fleet Management

InfoLink® Fleet and Operator Management puts the power of accurate, on-demand business metrics at your fingertips. When robust data drives confident decisions, your organization can achieve improved results in safety and compliance, higher productivity, lower costs and more efficient operations. InfoLink Data Services can help create a solid foundation to help you achieve your goals and provide data integration and other consultative services to continue your journey.

The RC 5700 Series: Raising the Standard
Contact your local Crown dealer for a demonstration.



Visit [crown.com](https://www.crown.com)

See the RC 5700 Series



Crown Equipment Corporation

New Bremen, Ohio 45869 USA

Tel 419-629-2311

Fax 419-629-3796

crown.com

You can count on Crown to build lift trucks designed for safe operation, but that's only part of the safety equation. Crown encourages safe operating practices through ongoing operator training, safety-focused supervision, maintenance and a safe working environment. Go to crown.com and view our safety section to learn more.

Because Crown is continually improving its products, specifications are subject to change without notice.

Crown, the Crown logo, the color beige, Access 1 2 3, eGen, Entry Bar, FlexRide, InfoLink, InfoPoint, Integrity Parts and Service System, Intrinsic Stability System and the ecologic logo are trademarks of Crown Equipment Corporation in the United States and other countries.

Copyright 2018-2021 Crown Equipment Corporation
SF14736 Rev. 03-21
Printed in U.S.A.



Clean Environment. Smart Business.

Printed on elemental chlorine free and sustainably forested paper.