

CROWN

SC 5200 SERIES



Multipurpose Workhorse

No matter the task, the SC 5200 Series provides the durability, maneuverability and precision to excel at multiple tasks in virtually any material handling application, whether loading and unloading trailers, performing dock and ramp work, transporting loads and replenishing inventory.

The Crown SC 5200 Series.
Getting More Done Every Day.

Visit crown.com
See the SC 5200 Series



Productivity Redefined

Today's facility is challenged to do more with less without compromise. The SC 5200 Series is versatile enough to handle nearly any material handling operation while providing operator comfort and long lasting, reliable performance.



Versatility

The SC 5200 Series can eliminate the need for multiple types of lift trucks in your facility, handling dock work, transport and replenishment with ease.

Comfort

The features and components of the SC 5200 are designed and manufactured to provide comfort and ease of use for increased productivity.

Intelligence

Crown designs lift truck control systems to provide intelligent feedback to the operator and the service technician to ensure outstanding performance and uptime.

Reliability

Robust components designed and manufactured by Crown ensure the SC 5200 is reliable in tough applications and strenuous environments.

Versatility

Flexibility to Handle Multiple Tasks

Increasing demands for productivity and profitability require a whole new level of adaptability and the ability to do more with less. Many applications in manufacturing, wholesale, retail, transportation and distribution require a lift truck that can handle a variety of specialized tasks.

The SC 5200 Series is able to do the work of multiple types of forklifts, eliminating the need for extra equipment and ensuring that you'll get more from your lift truck investment.



Working in Tight Spaces

Doing more with less applies to warehouse storage as well and requires the full use of every square inch in your facility. Narrow aisles and tight quarters are no match for the SC 5200 Series. Its optimized design and 68.5" truck length – the shortest in the industry – ensures it can maneuver where no other 3-wheel counterbalance forklift can.

	SC 5215	SC 5225	SC 5245	SC 5245	SC 5245
Truck Capacity (lbs)	3000	3000	3500	3500	4000
Truck Length (in)	68.5	72.8	73.0	77.2	77.2
Turning Radius (in)	54.2	58.5	58.5	62.7	62.7
Right Angle Stack (in) ^{†‡}	122.5	126.8	127.0	131.2	131.2

[†] Calculated with 48" load length and 6" clearance

[‡] Add 2" for sideshift

Customized to Your Application

Available in either 36v or 48v configurations, the SC 5200 Series provides power and precision to fit the task. Mast and tire options, along with attachment versatility, enable operators to work safely and productively.



Tire Options

Six tire options, including regular and non-marking, cushion, lugged and superelastic alternatives, are designed for use in a wide variety of environments.



Do More With Attachments

The SC 5200 Series offers a wide range of mast options and attachments including a quad mast, side shifters and more.



Rack Up Savings

Configure the SC 5200 Series for drive-in rack applications to optimize your warehouse space, decrease storage and retrieval time and reduce warehouse cost per pallet.

Comfort

Designed With the Operator in Mind.

It's simple: Your forklift operators are a critical component of your operation's productivity. That's why Crown lift trucks are designed to optimize operator comfort and performance.

Easy Entry and Exit

The SC 5200 Series features easy entry and exit to help operators move quickly, safely and effortlessly. A low step height, contoured seat deck and convenient handholds ensure that operators can easily move on and off the forklift.



Crown FlexSeat™

- Wide, durable flexible seat for greater comfort.
- Replaceable components for easy maintenance.
- Inherent suspension absorbs shock and vibration.

Full-Suspension Seat (Optional)

- Adjustable backrest and lumbar support.
- Operator weight adjustable.
- Fore/aft adjustable.



Comfortably In Control

Operator comfort is further enhanced with well-positioned controls, arm and elbow support provided by the optional D4 Armrest and available storage options that can be configured to the operator's preference.

- Manual controls are easy to reach and require low effort to activate.
- Optional D4 Armrest offers comfortable support to help reduce fatigue and can be combined with optional bionic controls that put lift truck functions within easy reach.
- Available Work Assist® Accessories provide secure, customizable storage for tools and other regularly used items to help maintain a clean, organized work environment.
- Optional Tilt Position Assist (TPA) stops the forks in a horizontal position when requested.
- The automatic parking brake engages when the truck comes to a complete stop, eliminating the need for a separate brake lever.



D4 Armrest

Features easy, one-handed adjustment of up/down and fore/aft positioning. For use with manual levers or with one of four integrated bionic control options.

Fingertip

Intuitive control of hydraulic and truck functions with minimized hand movement.



Mini-Lever

Variable spaced controls allow for precision movement with a pinch grip.



Dual-Lever

Smooth blending of hydraulic functions with ample spacing of controls for glove use.



Combination Lever

Well-spaced dual-lever for main operation and mini-levers for finer control of third and fourth functions.



Visibly Superior

Drivers benefit from enhanced visibility to see people, objects and equipment easily.

- Cab-forward design places the operator closer to the work and allows unobstructed view of the forks and floor.
- Low, sculpted cowl, narrow, offset steering column and visibility-optimized mast provides a clear view of the forks and load.
- Overhead guard is designed to provide better upward sight lines to view loads at height.

Intelligence

Intelligence to Work Smarter

Stability isn't an afterthought with the SC 5200 Series. Operators appreciate Crown's Intrinsic Stability System®, which proactively supports safety and efficiency.

On-board intelligence supports operators with automatic, real-time performance management and diagnostics to help ensure safe and efficient operation.

Cornering speed control

With its on-board intelligence, the SC 5200 Series knows the angle of the steer wheels and the speed of the truck and uses this information to adjust travel speed while turning.

Travel speed control

The SC 5200 Series automatically limits travel speeds based on load weight, lift height and steer angle.

Intelligent Ramp Control

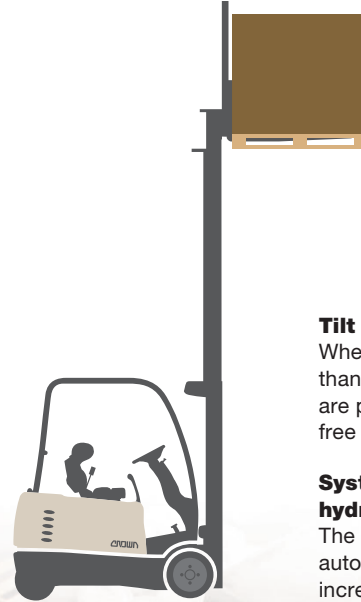
While on inclines, the SC 5200 Series keeps speed constant and automatically maintains position.

Tilt interlock

When forks and mast tilt more than two degrees forward, they are prevented from rising above free lift.

System controlled hydraulic speeds

The hydraulic system automatically limits tilt speed, increasing vehicle stability.



Work is not an uphill battle with Crown power

- 36v or 48v traction.
- Intelligent control with Access 1 2 3® technology.
- Robust Crown motor with powerful torque.
- e-GEN® braking for enhanced reliability and lower maintenance.



More Than One Way to Move in Two Directions

For additional speed and convenience, optional floor-mounted foot-operated directional control pedals can independently control acceleration, speed and direction.



Access 1 2 3® Comprehensive System Control

Like nothing else on the market, this system gives operators exceptional confidence through real-time monitoring and management of traction, braking, steering, hydraulics and other key truck systems. The truck constantly measures and interprets these factors, enabling the operator to concentrate on the task at hand. The system also helps maximize uptime by providing easy-to-use, on-board diagnostics to quickly pinpoint issues so corrective action can be taken.



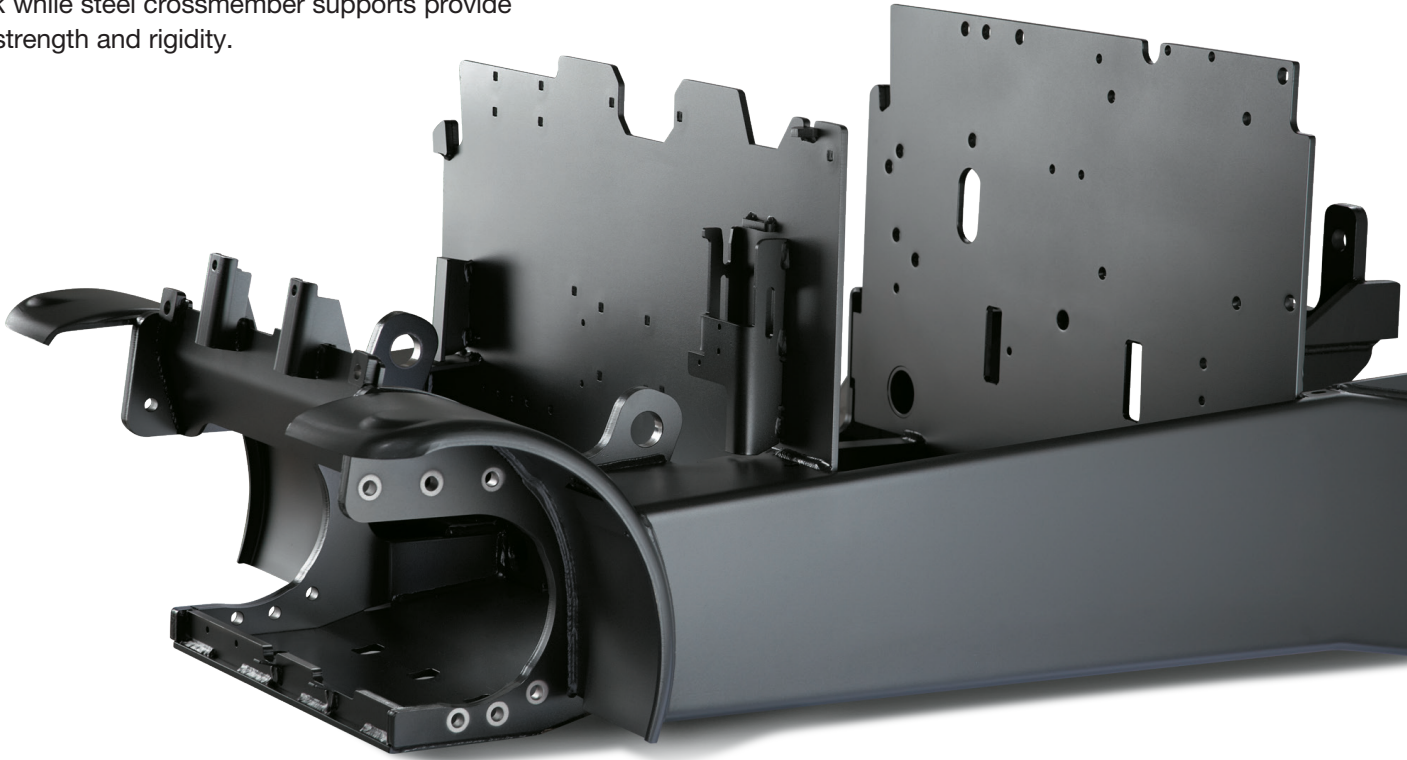
InfoLink®

The InfoLink wireless operator and fleet management system captures lift truck data, providing managers with the information they need to make knowledgeable decisions about OSHA compliance, truck impacts and energy usage.

Reliability

Performance for the Long Haul

With a strong and durable steel frame enhanced to hold up under tough conditions, the SC 5200 Series is built to last. Solid steel beams and steel plate form the backbone of the truck while steel crossmember supports provide additional strength and rigidity.



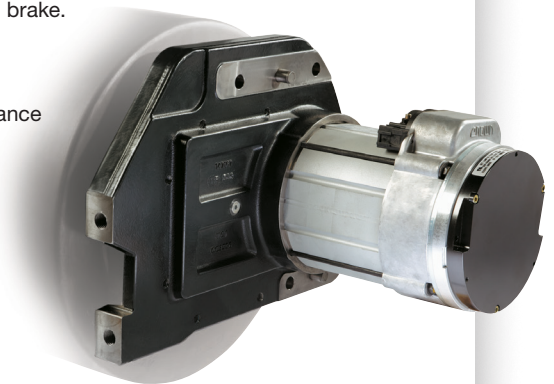
Heavy Duty Steer Axle

A solid steel steer axle with sealed rack and pinion design and heavy duty tapered roller bearings provides strength and protection against contaminants for long-term durability.

e-GEN Braking

e-GEN braking provides an edge in performance, service and cost of ownership by eliminating the traditional friction brake and features a comprehensive two-year warranty.

- Variable motor braking.
- Reduced pedal effort.
- Automatic parking brake.
- Fewer parts and wear points.
- Reduced maintenance requirements.



I-Beam Mast

A compact interlocking I-beam mast provides visibility without compromise, resulting in exceptional longitudinal and lateral stiffness and torsional resistance, plus an enhanced view of the forks and load.



Crown designs and manufactures up to 85 percent of its lift truck components including key parts like motors, drive units, and electronic modules. Crown further proves its mettle with strong design and engineering, putting more steel where it's needed most. You can count on Crown for years of reliable, cost-efficient performance and low total cost of ownership.



More Uptime for Your Investment

Crown's integrated approach combines truck feedback and diagnostics, Crown-made parts and dedicated service teams to give you more uptime and a low total cost of ownership.



Access123[®]



InfoLink[®]



InfoPoint[®]



Integrity Service System[®]

Access 1 2 3[®] technology enables advanced diagnostics through an intuitive display. This diagnostics system, used across all Crown trucks, increases technician proficiency, resulting in significant savings in service time and costs.

InfoLink[®] wireless operator and fleet management solution puts the power of accurate, up-to-date business metrics right at your fingertips.

Crown's InfoPoint[®] Quick Reference Guide and on-truck component maps provide technicians with vital information to quickly, accurately and easily resolve issues without additional wiring diagrams or schematics.

Crown's Integrity Parts and Service System[®] solutions ensure long-term truck performance by matching trained technicians with Crown-made parts for long-lasting performance. That's a major difference with Crown.

The SC 5200 Series: Getting More Done Every Day.
Contact your local Crown dealer for a demonstration.

 **Visit crown.com**
See the SC 5200 Series

ecologic™

Clean Environment. Smart Business.

Printed on elemental chlorine free and sustainably forested paper.

CROWN

You can count on Crown to build lift trucks designed for safe operation, but that's only part of the safety equation. Crown encourages safe operating practices through ongoing operator training, safety-focused supervision, maintenance and a safe working environment. Go to crown.com and view our safety section to learn more.

Crown Equipment Corporation
New Bremen, Ohio 45869 USA
Tel 419-629-2311
Fax 419-629-3796
crown.com

Because Crown is continually improving its products, specifications are subject to change without notice.

Crown, the Crown logo, the color beige, the ecologic logo, the Momentum Mark, Access 1 2 3, e-GEN, Intrinsic Stability System, InfoLink, FlexSeat, InfoPoint and Integrity Service System are trademarks of Crown Equipment Corporation in the United States and other countries.

Copyright 2011-2019 Crown Equipment Corporation
SF18608 Rev. 11-19
Printed in U.S.A.