



DSA Foam Dock Seal with Adjustable Head Pad

Product Specifications



DESIGN HIGHLIGHTS

- Adjustable head pad system operates utilizing an easy-release lever and has 48" working range to accommodate varying truck heights
- 18" high foam head pad is mounted on 10 ga. formed, painted steel which travels in slide tracks
- Adjustable spring-tension system provides for adjustment of counterbalance and horizontal tilt for smooth, jam-free operation
- Endurance-tested foam core is continuously bonded to frame surface with flexible, non-flammable adhesive.
- Roll-formed galvanized steel framing reduces pressure on building wall, 5 years warranty
- A wide selection of durable coated fabrics provide maximum durability
- Highly resilient, open-celled polyurethane foam keeps original shape and compresses easily to extend seal life
- Side pad bottoms are tapered to avoid pinching and wear
- All pads are vented for air and moisture release
- Full length yellow stripes guide drivers to the dock
- Heavy-duty, galvanized steel mounting brackets included

APPLICATION DATA

Door width: _____ ft. _____ in.
Door height: _____ ft. _____ in.
Dock height: _____ ft. _____ in.

Bumper protection*: _____ in.

(*Includes bumper projection and any building wall/foundation offset or cantilever)

TRUCKS AND TRAILERS SERVICED

Width: _____ Max. _____ Min.

Height: _____ Max. _____ Min.

Length: _____ Max. _____ Min.

Hydraulic tailgate: ☐ Yes ☐ No

Rear step section: ☐ Yes ☐ No

Tailgate/step section size: _____ in

Yard jockeys: ☐ Yes ☐ No

PROJECT INFORMATION

JOB NAME _____

ADDRESS _____

GENERAL CONTRACTOR _____

DISTRIBUTOR _____

QUANTITY _____

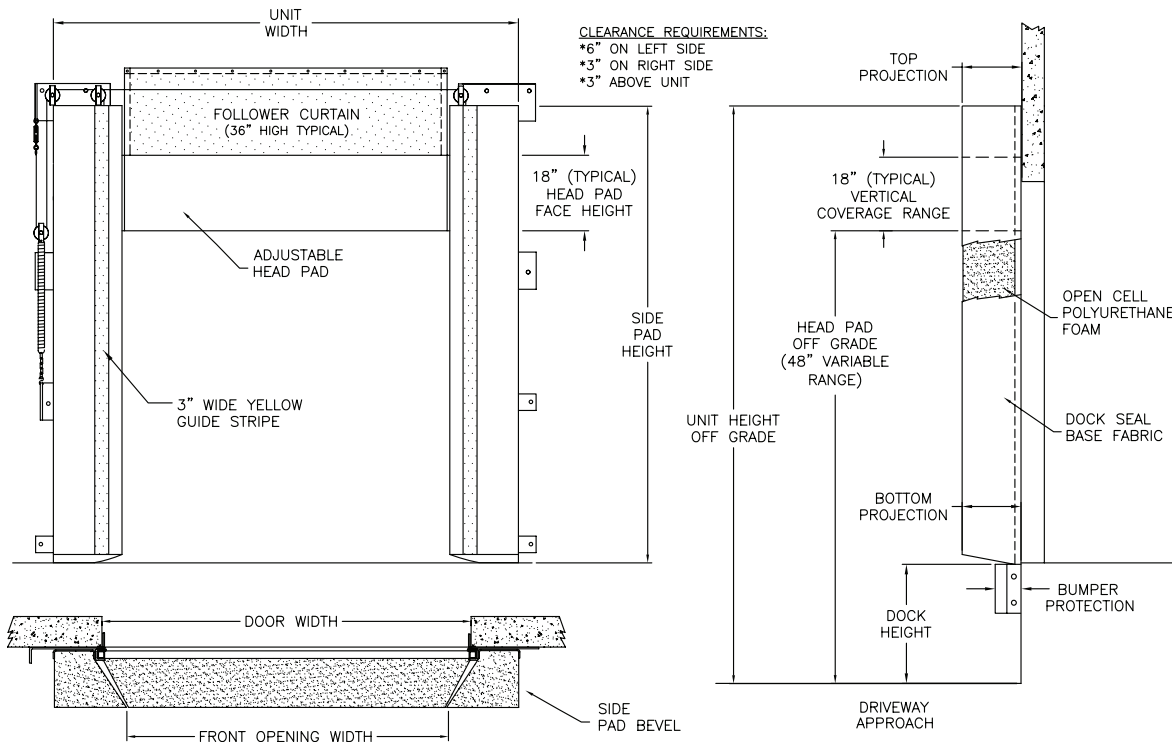
CERTIFIED FOR CONSTRUCTION

BY _____

COMPANY _____

ADDRESS _____

DATE _____



Quantity _____ Model: ☐ DSA

Distance to Outside of Side Pads: _____ (Total inches)

Side Pad Height: _____ (Total inches)

Side Pad Bevel: ☐ 12/12 ☐ 6/10 ☐ 8/12 ☐ 10/12 ☐ 10/15 ☐ 8/15 ☐ 12/15 ☐ 10/18 ☐ 6/14

Head Pad Bevel: ☐ 18/18

Base Material: ☐ 22 oz. vinyl ☐ 40 oz. vinyl ☐ 16 oz. CSM ☐ 40 oz. CSM ☐ TS-55®

Color: ☐ Black ☐ Tan ☐ Brown ☐ Blue ☐ Green

Taper: ☐ Tapered ☐ Non-Tapered

Top Projection: ☐ 8" ☐ 10" ☐ 12" ☐ 14" ☐ 16" ☐ 18" ☐ 20" ☐ 22" ☐ _____

Bottom Projection: ☐ 8" ☐ 10" ☐ 12" ☐ 14" ☐ 16" ☐ 18" ☐ 20" ☐ 22" ☐ _____

Bottom Flaps: ☐ None ☐ 3" ☐ 6" ☐ Inside ☐ Inside & front ☐ All 3 sides

Wear Surface: ☐ None ☐ Wear face ☐ Reinforced inside face ☐ Side pad 4" ☐ Side pad ☐ Head pad

Material: ☐ 22 oz. vinyl ☐ 40 oz. vinyl ☐ 40 oz. CSM ☐ TS-55®

Color: ☐ Black ☐ Tan ☐ Brown ☐ Blue ☐ Green

Wear Pleats: ☐ None ☐ WP4 ☐ WP8 ☐ WP16 ☐ Side pads

Material: ☐ 22 oz. vinyl ☐ 40 oz. vinyl ☐ 40 oz. CSM ☐ TS-55®

Color: ☐ Black ☐ Tan ☐ Brown ☐ Blue ☐ Green

Options: ☐ Door numbers ☐ Flame retardant fabric & foam ☐ Flame retardant fabric only ☐ Flame retardant foam only

Side Pad Mounting Brackets: ☐ None ☐ Flats & angles ☐ Angles ☐ 1 1/2" Offset flats & angles

*Conversions: To convert measurements to metric, see formulas below:

Inches x 25.4 = millimeters (Example: 4" x 25.4 = 101.6 mm)

Feet x .3048 = meters (Example: 12' x .3048 = 3.66 m)



Kelley
 1612 Hutton Drive, Suite 140
 Carrollton, TX 75006
 800.558.6960
www.kelleydocksolutions.com

4Front Engineered Solutions reserves the right to change specifications and designs without notice and without incurring obligations. 4Front Engineered Solutions products may be the subject of one or more U.S. and/or foreign, issued and/or pending, design and/or utility patents. Kelley as word and logo are registered trademarks belonging to ASSA ABLOY Entrance Systems AB or other companies controlled by the same organization. All rights reserved.

©ASSA ABLOY. All rights reserved. Part of ASSA ABLOY. Printed in USA. KPS-SEDSA-1220