



DSS Foam Dock Seal with Head Pad

Product Specifications



DESIGN HIGHLIGHTS

- Provides a positive seal between internal and external environments. Prevents the passage of dust, insects, exhaust fumes and other airborne particulate matter while the loading dock is in use
- Roll-formed, galvanized steel framing with 5 year warranty
- Endurance tested foam core is continuously bonded to frame surface with flexible, non-flammable adhesive
- A wide selection of durable coated fabrics provide maximum durability
- Highly resilient, open-celled polyurethane foam keeps original shape and compresses easily to extend the seal life
- Side pad bottoms are tapered to avoid pinching and wear
- All pads are vented for air and moisture release
- Full length yellow stripes guide drivers to the dock
- Heavy-duty, galvanized steel mounting brackets included

APPLICATION DATA

Door width: _____ ft. _____ in.
 Door height: _____ ft. _____ in.
 Dock height: _____ ft. _____ in.

Bumper protection*: _____ in.

(*Includes bumper projection and any building wall/foundation offset or cantilever)

TRUCKS AND TRAILERS SERVICED

Width: _____ Max. _____ Min.

Height: _____ Max. _____ Min.

Length: _____ Max. _____ Min.

Hydraulic tailgate: Yes No

Rear step section: Yes No

Tailgate/step section size: _____ in

Yard jockeys: Yes No

PROJECT INFORMATION

JOB NAME _____

ADDRESS _____

GENERAL CONTRACTOR _____

DISTRIBUTOR _____

QUANTITY _____

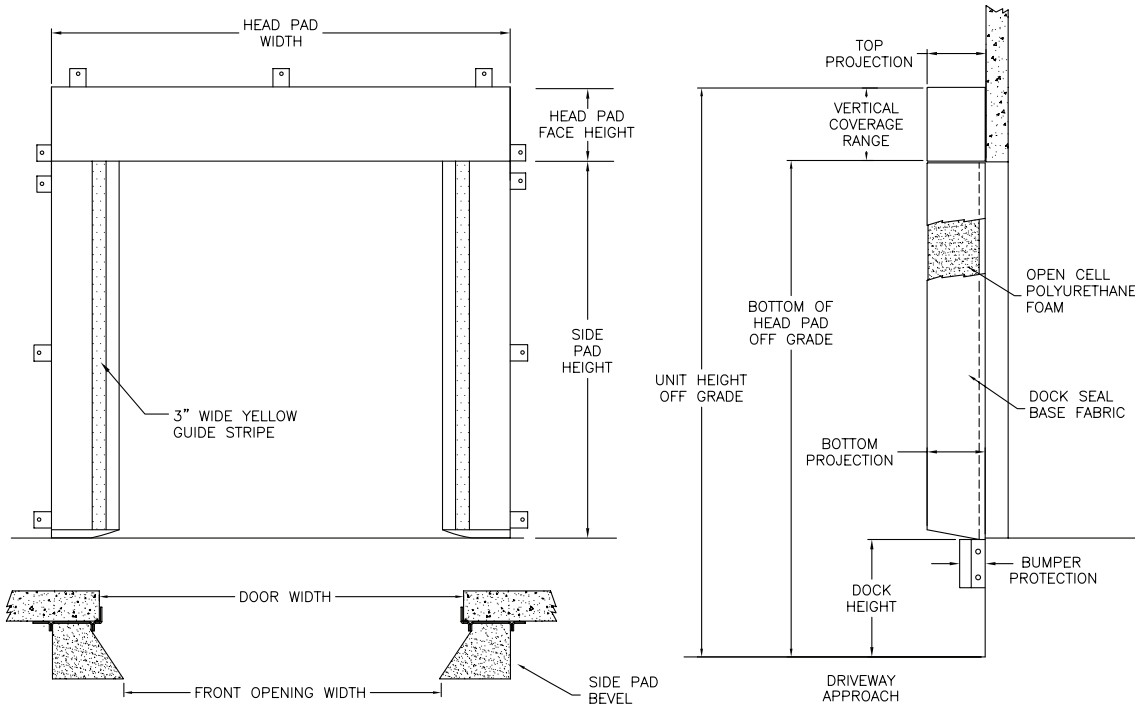
CERTIFIED FOR CONSTRUCTION

BY _____

COMPANY _____

ADDRESS _____

DATE _____



Quantity _____ **Model:** DSS

Head Pad Width: _____ (Total inches)

Head Pad Back/Face: 12/12 18/18 24/24 12/15 12/18 Wearmaster head pad

Drop Curtain: None 12" 18" 24" Velcro strips Full width

Side Pad Height: _____ (Total inches)

Side Pad Back/Face: 12/12 6/10 8/12 10/12 10/15 8/15 12/15 10/18 6/14

Base Material: 22 oz. vinyl 40 oz. vinyl 16 oz. CSM 40 oz. CSM TS-55®

Color: Black Tan Brown Blue Green

Taper: Tapered Non-Tapered

Top Projection: 8" 10" 12" 14" 16" 18" 20" 22" 24"

Bottom Projection: 8" 10" 12" 14" 16" 18" 20" 22" 24"

Bottom Flaps: None 3" 6" Inside Inside & front All 3 sides

Blockout: None Top projection _____" Bottom projection _____"

Wear Pleats: None WP4 WP8 WP16 Side pads Head pad corners

Material: 22 oz. vinyl 40 oz. vinyl 40 oz. CSM TS-55®

Color: Black Tan Brown Blue Green

Wear Face: None Head pad Side pad

Material: 22 oz. vinyl 40 oz. vinyl 40 oz. CSM TS-55®

Color: Black Tan Brown Blue Green

Reinforced Inside Face: Standard Side pad full height

Material: 22 oz. vinyl 40 oz. vinyl 40 oz. CSM TS-55®

Color: Black Tan Brown Blue Green

Options: Door numbers Flame retardant fabric & foam Flame retardant fabric only Flame retardant foam only

Side Pad Mounting Brackets: None Flats & angles Angles 1 1/2" Offsets & Angles



Kelley
 1612 Hutton Drive, Suite 140
 Carrollton, TX 75006
 800.558.6960
 www.kelleydockolutions.com