

SEALS



FORGING A STEEL STANDARD



Conventional Wood Framing

Building Wall Pressure

Solid mass (1 1/2" thick) wood frame doesn't yield as seal is compressed. Building damage may occur.

Durability

Susceptible to rotting, Splitting, cracking and warping.

Method of Cover Attachment

Staples and nails rust and, over time, create weak spots in the wood.

Galvanized Steel Framing

Solid mass is replaced with compressible foam on steel frame. Less chance of building damage.

Durability

No rotting, Splitting, cracking or warping.

Method of Cover Attachment

Plated TEK screws with load-spreading washers in steel provide a stronger, more durable hold.

Tufsteel® Galvanized Steel Framing delivers low cost of ownership through durability and value. Tufsteel framing is backed with a 5-year warranty!

KELLEY WEARMASTER® DOCK SEAL HEAD PAD SYSTEM

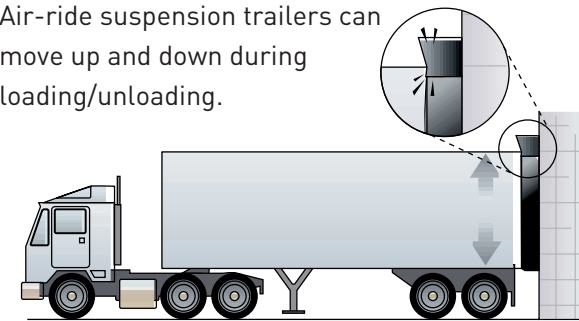
Yard Jockey Operation? Double the life of your dock seal with Wearmaster.

- The patented WearMaster® features an innovative two-piece movable head pad and wear pleat system that actually moves vertically with the trailer, reducing wear on your head pad and side pads, increasing the life of your dock seal.
- The durable head pad slides up to six inches with the trailer as it shifts up or down from load weight changes, air-ride suspensions or yard-spotting tractors.
- The WearMaster dock seal, constructed of Kelley's strongest materials, including roll-formed Tufsteel® galvanized steel framing, will enhance seal performance at your loading dock.

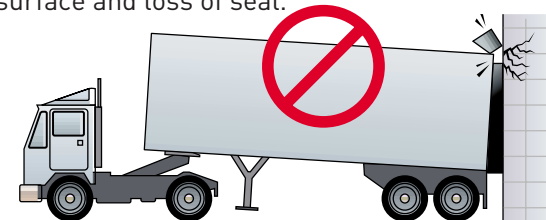


The Problem

Air-ride suspension trailers can move up and down during loading/unloading.

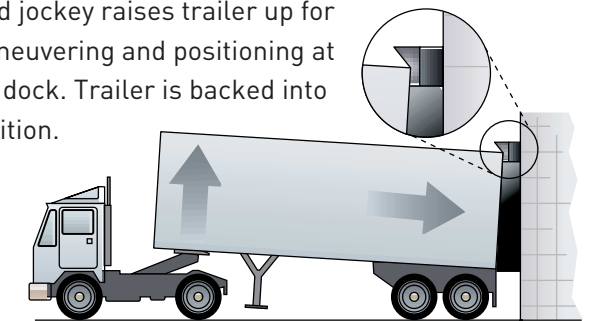


When a stationary head pad and wear pleat system is utilized, after time, movement of the trailer causes damage and can lead to detachment resulting in an unprotected wall surface and loss of seal.

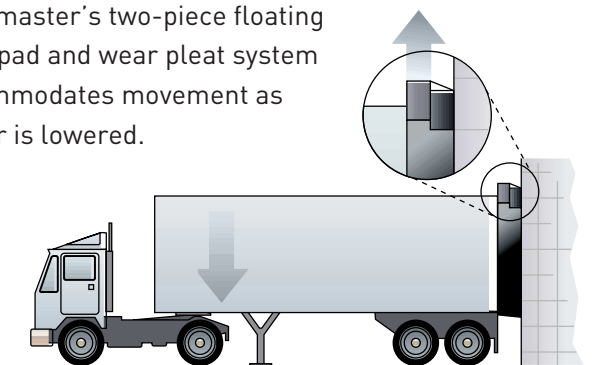


The Solution

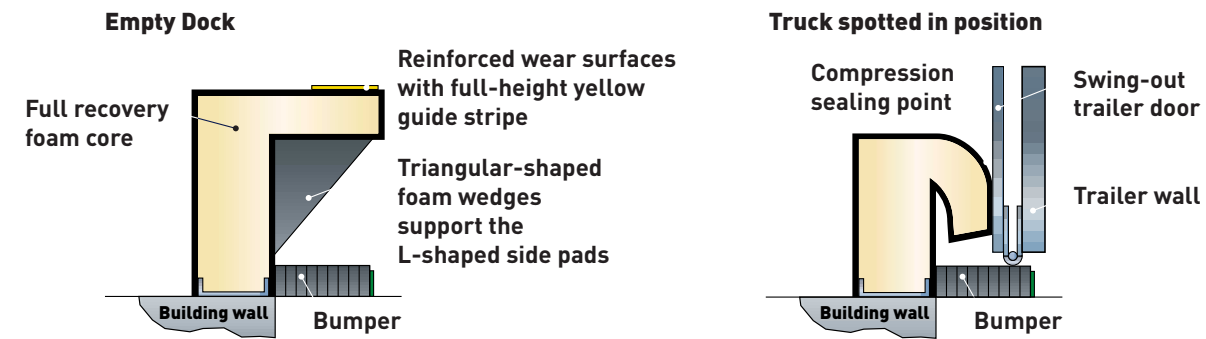
Yard jockey raises trailer up for maneuvering and positioning at the dock. Trailer is backed into position.



Wearmaster's two-piece floating head pad and wear pleat system accommodates movement as trailer is lowered.



L-SHAPED DOCK SEALS



DSHL SERIES L-SHAPED DOCK SEAL WITH HEAD CURTAIN

While adapting to a wide variety of trailer widths, the DSHL provides total access to the trailer when docked at doors with openings over 9' high. The DSHL features a modular hood-style head curtain that does not over-compress due to extra projection required on similar competitive models. The DSHL is equipped with the standard roll-formed Tufsteel® galvanized steel framing.

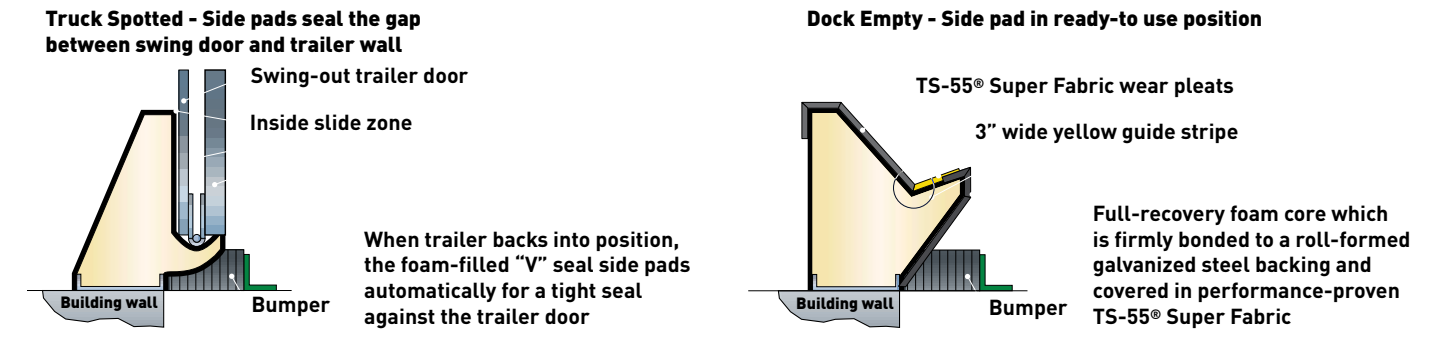


DSSL SERIES L-SHAPED DOCK SEAL WITH STATIONARY HEAD PAD

Whether your trailer is 8' or 8' 6" wide, the DSSL provides full-width access to the trailer when docked at doors up to 9' high. Extremely versatile, the DSSL features a compression foam head pad with L-shaped side pads and roll-formed Tufsteel galvanized steel framing. The side pads are equipped with triangular-shaped foam wedges that support the "L-shape" of the side pads.



V-SHAPED DOCK SEALS



VS SERIES DOCK SEAL WITH STATIONARY HEAD PAD

Experience great sealing effectiveness even if your trailer is docked off-center. The patented V-Seal is the ideal dock seal for sealing the hinge air gap and providing better access to the back of the trailer. The V-Seal accommodates various trailer widths and dock doors up to 9'.

DESIGN ADVANTAGES

- Exclusive TS-55® Super Fabric base material provides exceptional wear.
- TS-55® SuperFabric wear face protects against sharp edges on the outside of trailers.
- 3" inside bottom flaps.
- Roll-formed Tufsteel galvanized steel framing.

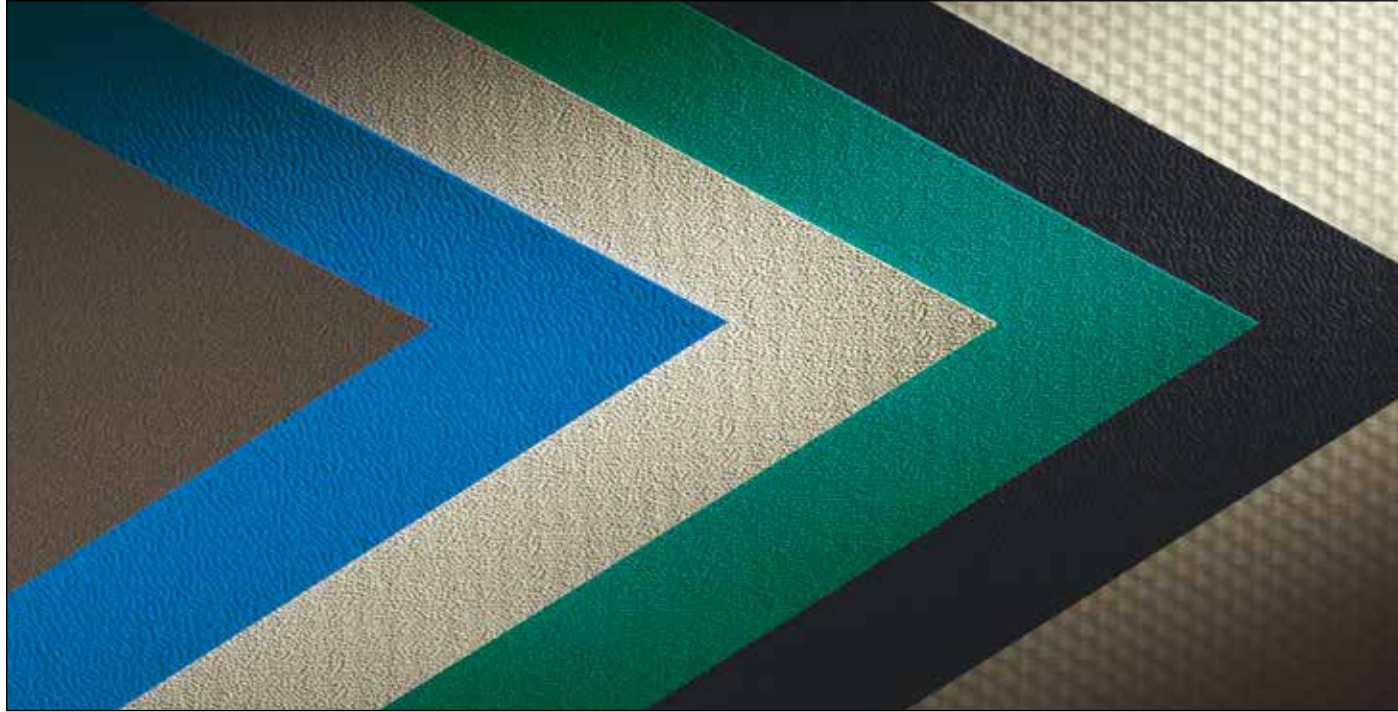


VSH SERIES DOCK SEAL WITH HEAD CURTAIN

This exclusive V-Seal model offers a tight sidewall seal, with the added benefit of a hood-style head curtain for application with taller doorways. The unique modular hood configuration includes extra-durable TS-55® Super Fabric curtain, support pads on seamless aluminum tubing for front support, end caps and roll-formed Tufsteel galvanized steel framing.



AVAILABLE FABRICS



TS-55® SUPER FABRIC

Heavy-duty polyester-based fabric with a polymer blend coating on both sides resulting in the highest puncture and tear resistance of any fabric in the industry.

40 OZ. VINYL

Woven polyester base fabric with a vinyl coating on both sides.

22 OZ. VINYL

Woven polyester-based fabric with a vinyl coating on both sides.

FLAME RETARDANT FABRIC

Many of our fabrics offer optional flame retardant designs. These fabrics are engineered or tested to the strict standards of the California State Title 19 and NFPA-701. These flame retardant fabrics are designed to self extinguish a flame in two seconds or less once the source is removed.

Note: Not all fabrics are available in all colors. Please check with your local Kelley Distributor to verify color availability in your choice of fabric. Due to printing variances, actual fabric colors may differ.

DOCK SEAL OPTIONS AND ACCESSORIES

Wear Pleats

- Provide maximum resistance to trailer abrasion.
- Fabric pleats overlap on pad face.
- Available in 4", 8" and 16" exposures.

DSH with Foam Front

- Foam front is sewn to the face of the hood
- Available in 2" thickness.

Head Curtain Pull Rope Assembly

- For easy adjustment of head curtain for various trailer heights.

Bottom Flaps

- Close gap at bottom of side pads.
- Extend pad when using above-the-dock bumper
- Cover fabric is attached to side pad.

Wear Faces

- Provide more durability and life by adding an extra layer of fabric to the face of the pads
- Available for interior side pad.

Flame-Retardant Foam and Fabric

- Meets federal standards.

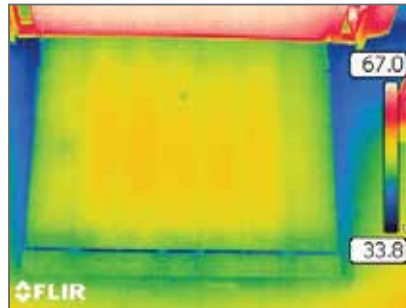


GUARD AGAINST ENERGY LOSS

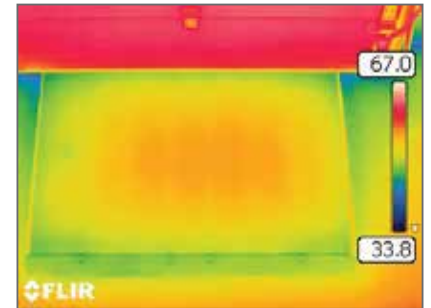
Energy Guard® prevents energy loss by providing a superior perimeter seal along the sides and rear of the leveler and blocks dirt, debris & insects from infiltrating the loading dock. The innovative design closes off the gaps between the dock leveler and concrete pit walls, preventing the mass flow of air into and out of the facility and minimizing energy loss. Energy Guard is a factory installed option available on all dock levelers.

DESIGN ADVANTAGES

- Seal assemblies rotate rather than scrape the pit wall to reduce wear and increase effective life
- Expanded sealing range creates an effective perimeter seal up to 9" above dock level
- Rear hinge seal assembly's durable 2-ply material flexes during operation to block air flow at the rear
- Design leaves access to the pit clear for cleaning and dock leveler inspections
- Factory Installed – No field installation or pit mounted hardware
- Design avoids risk of fabric being cut, torn or damaged by trailers or debris resulting in expensive replacement
- Unrestricted access to pit for cleaning and dock leveler inspection. No curtains or fabric blocking access to the dock leveler and pit



BEFORE: Hot or cold air can easily transfer through perimeter gaps.



AFTER: ENERGY GUARD effectively seals off the perimeter gaps.

DON'T JUST OBSERVE IT, LIVE THE EXPERIENCE.

Kelley leads the industry in specialty dock levelers, safety products and programmable control systems, offering a comprehensive portfolio of loading dock and warehouse solutions. We are delighted to invite you to our 6,000 square foot showroom, known as the Academy in Carrollton, Texas. The Academy gives you a very special opportunity to get to know our products in person. Gain hands on experience and enjoy one-on-one interaction with our engineering and manufacturing team in this state-of-the-art facility.

CAN'T MAKE THE TRIP TO DALLAS?

Let our Mobile Academy come to you. Our 53' completely enclosed and temperature-controlled trailer features over 25 full-sized, fully-functional dock equipment demo units. Call 1-877-778-DOCK (3625) to schedule an appointment and we'll drive our solutions straight to your door.



Kelley
1612 Hutton Drive, Suite 140
Carrllton, TX 75006
800.558.6960
www.kelleydockolutions.com



4Front Engineered Solutions reserves the right to change specifications and designs without notice and without incurring obligations. 4Front Engineered Solutions products may be the subject of one or more U.S. and/or foreign, issued and/or pending, design and/or utility patents. Kelley as word and logo are registered trademarks belonging to ASSA ABLÖY Entrance Systems AB or other companies controlled by the same organization. All rights reserved.

©ASSA ABLÖY. All rights reserved. Part of ASSA ABLÖY. Form # KCB-SE00-0621