

# S-600 Foam Dock Seal with Head Pad

## Product Specifications



### DESIGN HIGHLIGHTS

- Roll-formed, galvanized steel framing with 5 year warranty against rotting, splitting or cracking
- Endurance tested foam core is continuously bonded to frame surface with flexible, non-flammable adhesive
- A wide selection of durable coated fabrics provide maximum durability
- Highly resilient, open-celled polyurethane foam keeps original shape and compresses easily to extend the seal life
- Side pad bottoms are tapered to avoid pinching and wear
- All pads are vented for air and moisture release
- Full length yellow stripes guide drivers to the dock

### APPLICATION DATA

Door width: \_\_\_\_\_ ft. \_\_\_\_\_ in.

Door height: \_\_\_\_\_ ft. \_\_\_\_\_ in.

Dock height: \_\_\_\_\_ ft. \_\_\_\_\_ in.

Bumper protection\*: \_\_\_\_\_ in.

(\*Includes bumper projection and any building wall/foundation offset or cantilever)

### TRUCKS AND TRAILERS SERVICED

Width: \_\_\_\_\_ Max. \_\_\_\_\_ Min.

Height: \_\_\_\_\_ Max. \_\_\_\_\_ Min.

Length: \_\_\_\_\_ Max. \_\_\_\_\_ Min.

Hydraulic tailgate:  Yes  No

Rear step section:  Yes  No

Tailgate/step section size: \_\_\_\_\_ in

Yard jockeys:  Yes  No

### PROJECT INFORMATION

JOB NAME \_\_\_\_\_

ADDRESS \_\_\_\_\_

GENERAL CONTRACTOR \_\_\_\_\_

DISTRIBUTOR \_\_\_\_\_

QUANTITY \_\_\_\_\_

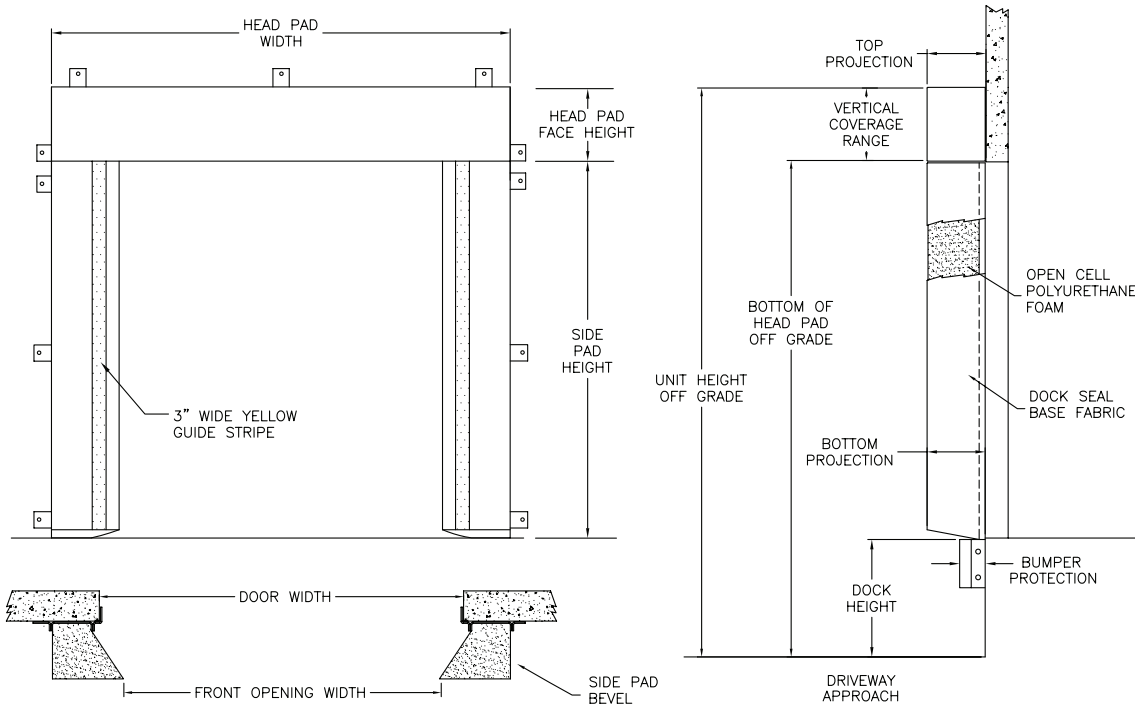
### CERTIFIED FOR CONSTRUCTION

BY \_\_\_\_\_

COMPANY \_\_\_\_\_

ADDRESS \_\_\_\_\_

DATE \_\_\_\_\_



Quantity \_\_\_\_\_

Head Pad Width: \_\_\_\_\_ (Total inches)

Head Pad Back/Face:  12/12  18/18  24/24  12/15  12/18

Drop Curtain:  None  12"  18"  24"  Hook-loop  No hook-loop  Full width

Side Pad Height: \_\_\_\_\_ (Total inches)

Side Pad Back/Face:  6/10  8/12  10/12  12/12  12/15  8/15  6/14  10/18  8/23

Base Material:  22 oz. vinyl  40 oz. vinyl  XL-100

Color:  Black  Tan  Brown  Blue  Green

Taper:  Tapered  Non-Tapered

Top Projection:  8"  10"  12"  14"  16"  18"  20"  22"  \_\_\_\_\_

Bottom Projection:  8"  10"  12"  14"  16"  18"  20"  22"  \_\_\_\_\_

Blockout:  None **Blockout Projection:**  2"  4"  6"  8"  10"  12"  \_\_\_\_\_

Wear Pleats:  None  4"  8"  16"  Head and side pads  Head pad corners only

**Material:**  22 oz. vinyl  40 oz. vinyl  XL-100

**Color:**  Black  Tan  Brown  Blue  Green

Wear Face:  None  Head pad  Side pad

**Material:**  22 oz. vinyl  40 oz. vinyl  XL-100

**Color:**  Black  Tan  Brown  Blue  Green

Reinforced Inside Face:  None  Side pad 4"  Side full height

**Material:**  22 oz. vinyl  40 oz. vinyl  XL-100

**Color:**  Black  Tan  Brown  Blue  Green

Options:  Door numbers  24" Guide stripes  Flame retardant fabric  Flame retardant foam

Bottom Flaps:  None  3"  6" **Bottom Flaps Location:**  Inside  Inside front  All 3 sides

Side Pad Mounting Brackets:  None  Flats & angles  Angles  1 1/2" Offsets & Angles

\*Note: Consult factory for blackout application assistance.

\*Conversions: To convert measurements to metric, see formulas below:

Inches x 25.4 = millimeters (Example: 4" x 25.4 = 101.6 mm)

Feet x .3048 = meters (Example: 12' x .3048 = 3.66 m)



**Serco**  
 1612 Hutton Drive, Suite 140  
 Carrollton, TX 75006  
 800.933.4834  
 www.sercodockproducts.com

4Front Engineered Solutions reserves the right to change specifications and designs without notice and without incurring obligations. 4Front Engineered Solutions products may be the subject of one or more U.S. and/or foreign, issued and/or pending, design and/or utility patents. Serco as word and logo are registered trademarks belonging to ASSA ABLOY Entrance Systems AB or other companies controlled by the same organization. All rights reserved.

©ASSA ABLOY. All rights reserved. Part of ASSA ABLOY. Printed in USA. Form # SPS-SE600-0121