

S-800 Foam Dock Seal with Adjustable Head Pad

Product Specifications



DESIGN HIGHLIGHTS

- Adjustable head pad system operates utilizing an easy-release lever and has 48" working range to accommodate varying truck heights
- 18" high foam head pad is mounted on steel pan which travels in slide tracks
- Adjustable spring-tension system provides for adjustment of counterbalance and horizontal tilt for smooth, jam-free operation
- Highly resilient, open-celled polyurethane foam keeps original shape and compresses easily to extend seal life
- Roll-formed galvanized steel framing reduces pressure on building wall, 5 years warranty against rotting, splitting or cracking
- A wide selection of durable coated fabrics provide maximum durability
- Highly resilient, open-celled polyurethane foam keeps original shape and compresses easily to extend seal life
- All pads are vented for air and moisture release
- Full length yellow stripes guide drivers to the dock

APPLICATION DATA

Door width: _____ ft. _____ in.
 Door height: _____ ft. _____ in.
 Dock height: _____ ft. _____ in.

Bumper protection*: _____ in.

(*Includes bumper projection and any building wall/foundation offset or cantilever)

TRUCKS AND TRAILERS SERVICED

Width: _____ Max. _____ Min.

Height: _____ Max. _____ Min.

Length: _____ Max. _____ Min.

Hydraulic tailgate: Yes No

Rear step section: Yes No

Tailgate/step section size: _____ in

Yard jockeys: Yes No

PROJECT INFORMATION

JOB NAME _____

ADDRESS _____

GENERAL CONTRACTOR _____

DISTRIBUTOR _____

QUANTITY _____

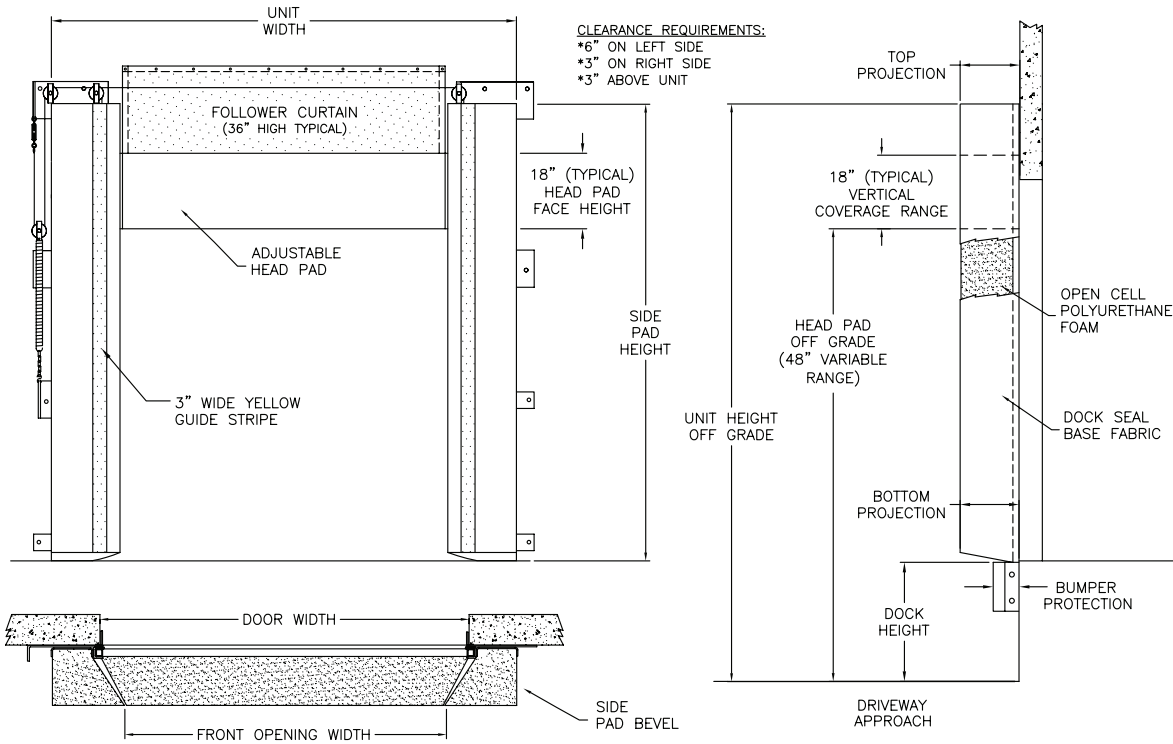
CERTIFIED FOR CONSTRUCTION

BY _____

COMPANY _____

ADDRESS _____

DATE _____



Quantity _____ Unit Width _____

Head Pad Back Face: 18/18 24/24 12/18

Follower Curtains: None 36" Standard _____

Side Pad Height: _____ (Total inches)

Side Pad Back Face: 6/10 8/12 10/12 12/12 8/15 12/15 10/18 6/14 8/23

Base Material: 22 oz. vinyl 40 oz. vinyl XL-100

Color: Black Tan Brown Blue Green

Taper: Tapered Non-Tapered

Top Projection: 8" 10" 12" 14" 16" 18" 20" 22" _____

Bottom Projection: 8" 10" 12" 14" 16" 18" 20" 22" _____

Wear Face: None Side pad Head pad

Material: 22 oz. vinyl 40 oz. vinyl XL-100

Color: Black Tan Brown Blue Green

Wear Pleats: None 4" 8" 16"

Material: 22 oz. vinyl 40 oz. vinyl XL-100

Color: Black Tan Brown Blue Green

Reinforced Inside Face: None Side Pad 4" Side full height

Material: 22 oz. vinyl 40 oz. vinyl XL-100

Color: Black Tan Brown Blue Green

Options: Door numbers 24" guide stripes Flame retardant fabric Flame retardant foam

Bottom Flaps: 3" 6" _____ Bottom Flaps Location: Inside Inside front All 3 sides

Mounting Brackets: Flats & angles Angles 1 1/2" Offset flats & angles

*Note: Consult factory for blackout application assistance.

*Conversions: To convert measurements to metric, see formulas below:

Inches x 25.4 = millimeters (Example: 4" x 25.4 = 101.6 mm)

Feet x .3048 = meters (Example: 12' x .3048 = 3.66 m)



Serco
 1612 Hutton Drive, Suite 140
 Carrollton, TX 75006
 800.933.4834
 www.sercodockproducts.com

4Front Engineered Solutions reserves the right to change specifications and designs without notice and without incurring obligations. 4Front Engineered Solutions products may be the subject of one or more U.S. and/or foreign, issued and/or pending, design and/or utility patents. Serco as word and logo are registered trademarks belonging to ASSA ABLÖY Entrance Systems AB or other companies controlled by the same organization. All rights reserved.

©ASSA ABLÖY. All rights reserved. Part of ASSA ABLÖY. Printed in USA. Form # SPS-SE800-0121