

# PACKAGE STOPS

## DEAD TYPE

Dead type Package Stops are simply placed on bed section of gravity wheel and 1 3/8 in. roller conveyor. Styles A, B, or C can be used to lift or stop cartons or boxes. Easily attached to conveyor.

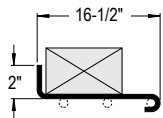
- 3 Styles- 4 Widths
- 12 ga. Steel



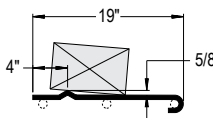
DEAD STOP

Between Rail Width	Overall Frame Width	Package Stop Width
10"	12"	9"
13"	15"	12"
16"	18"	15"
22"	24"	21"

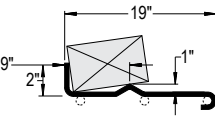
STYLE "A"



STYLE "B"

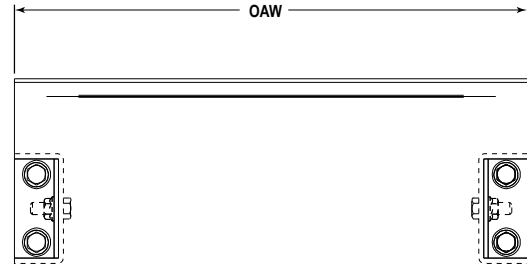
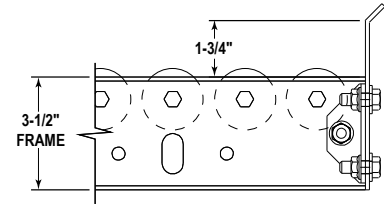


STYLE "C"



## TERMINATING END STOP

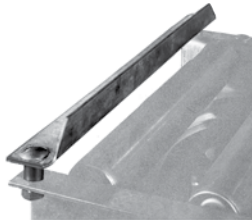
Terminating End Stops mount to end of conveyor for stopping boxes, cartons, etc. Bolts to top flange of conveyor channels. Available in all standard conveyor widths.



## ANGLE END STOP

Angle End Stop mounts to end of conveyor for stopping boxes, cartons, etc. Bolts to top flange of conveyor channels. Available in all standard conveyor widths.

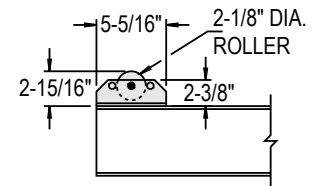
- 1 1/2 in. x 1 1/2 in. x 12 ga. powder painted steel for 190-LR, 138-ACC, 190-ACC, 190-NSP, 190-ACZ, SW, 1 3/8SR, & 19GSR conveyors
- 2 in. x 2 in. x 1/4 in. powder painted steel for 2 1/2 & 2 3/8 in. gravity



## RAISED END ROLLER

Raised End Roller Stop can be mounted at end or any desired location along conveyor (some drilling may be required). Steel angle brackets hold 2 1/8 in. dia. x 1/8 in. wall galvanized roller with 7/16 in. hex shaft. Bolts to top flange of conveyor channels. For Models 190-LR, 138-ACC, 190-ACC, 190-ACZ, SW, 1 3/8SR, & 19GSR.

- Available in all standard widths.
- Capacity: 150 lbs. live load capacity at 65 fpm.



## HAND OPERATED BLADE/ROLLER

Hand Operated Stops are used where manual line control is required such as assembly work stations, shipping areas, etc. Can be mounted to underside of 190-LR, 138-ACC, 190-ACC, 190-NSP, 190-ACZ, 1 3/8SR & 19GSR Conveyors.

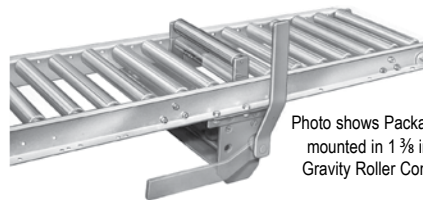


Photo shows Package Stop mounted in 1 3/8 in. dia. Gravity Roller Conveyor.

### • STANDARD SPECIFICATIONS

**CAPACITY**—Blade 50 lbs. for 1 3/8 in. roller and 150 lbs. for 1.9 in. roller. 1 3/8 in. dia. roller 50 lbs., 1.7 in. dia. roller 150 lbs. All are live load capacities at 65 FPM.

**BEARINGS**—Cam roller bearings to absorb impact.

**OPERATION**—Hand operated lever to raise or lower stop. Can be used in normally up or down positions.

**STOP**—7 ga. formed angle 1 in. x 1 1/2 in. for 1 3/8 in. conveyors, 1 1/2 in. x 1 1/2 in. for 1.9 in. & 2.0 in. conveyors. Roller 1 3/8 in. dia. x 18 ga. galvanized steel for 1 3/8 in. conveyors. 1.7 in. dia. x 13 ga. unplated steel roller for 1.9 in. conveyors.

**STROKE**—1 7/8 in. above rollers.

