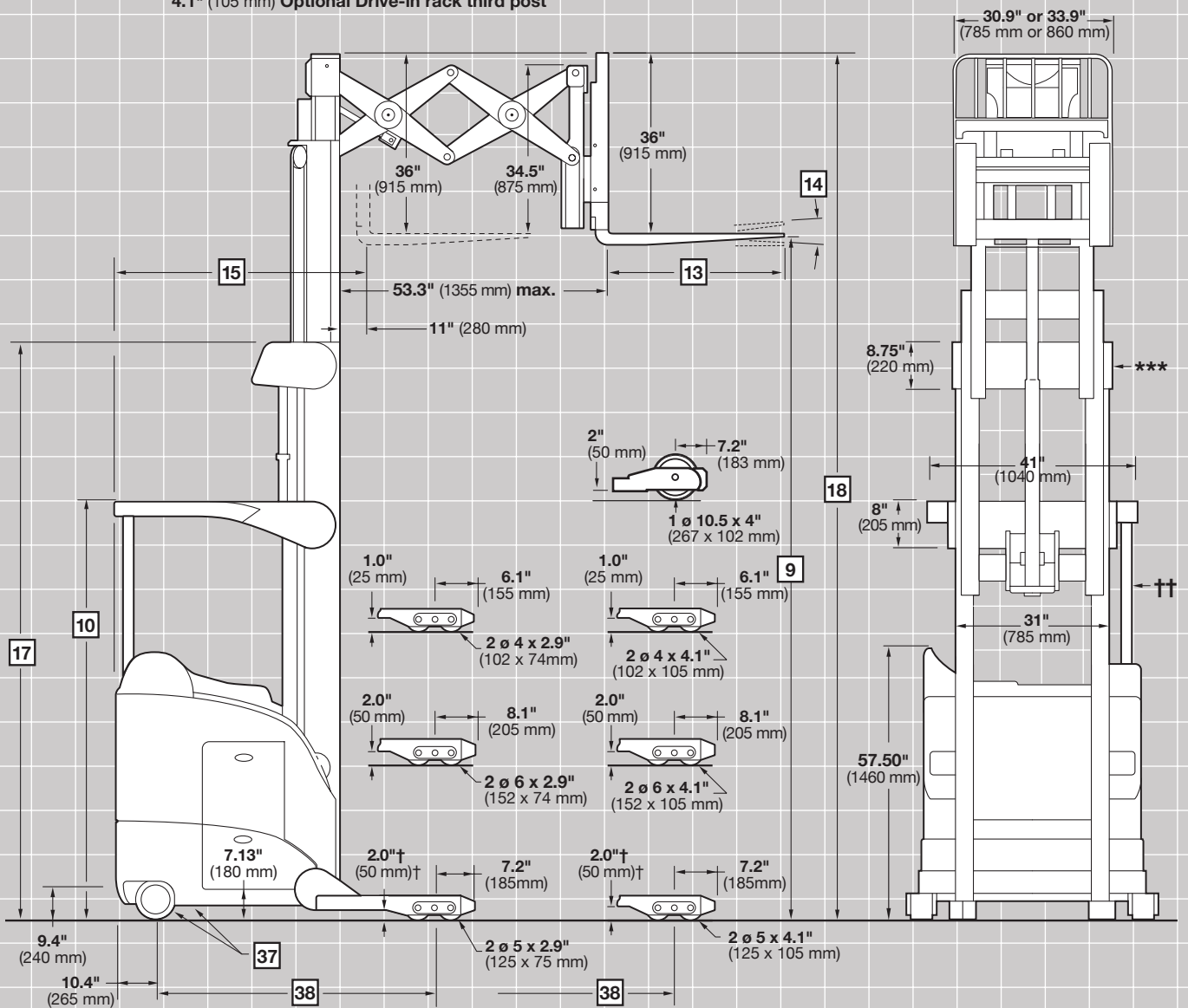
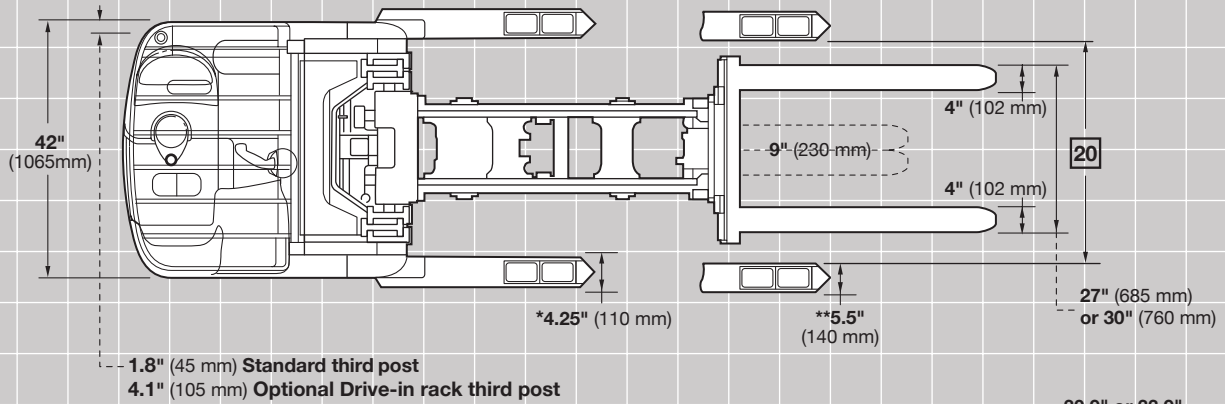


**CROWN**

# RD 5700 SERIES

**Specifications**  
Narrow-Aisle Reach Truck





\* 4.6" (120 mm) with Quick Change Load Wheels

\*\* 5.86" (150 mm) with Quick Change Load Wheels

\*\*\*Top tie bar width- 33" (835 mm) for 240" (6095 mm) or 270" (6860 mm) lift. 35" (900 mm) for 300" (7620 mm) and above.

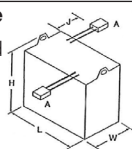
† 1" (25 mm) on lift heights above 321" (8150 mm)

†† Standard third post location, refer to dimension in top view.

# RD 5700 Series

# Specifications

			Imperial	Metric	
General Information	1	Manufacturer	Crown Equipment Corporation		
	2	Model	RD 5725-32		
	3	Load Capacity*	Max	lb kg	3200 1450
	4	Load Center	Fork Face to Load CG	in mm	24 600
	5	Power	36 Volts		
	6	Operator Type	Reach	Stand	
	7	Tire Type	Load/Caster/Drive	Poly / Poly / Poly	
	8	Wheels (x = driven)	Load/Power Unit	4 / 2 (1x)	
Dimensions		Mast Type	High Visibility		
	9	Lift Height	in mm	See Mast Chart	
	10	Guard Height	in mm	See Mast Chart	
	13	Forks	Standard L x W x T	in mm	36 x 4 x 1.5 915 x 102 x 38
			Optional Lengths	in mm	30, 39, 42, 45, 48 760, 990, 1065, 1145, 1220
	14	Carriage	Tilt F°/B°	degree	3 / 4
	15	Headlength	Comp't "B"	in mm	56.48 1435
			Comp't "C"	in mm	58.48 1485
			Comp't "D"	in mm	60.23 1530
			Comp't "E"	in mm	62.85 1595
17	Overall Collapsed Height	in mm	See Mast Chart		
18	Overall Extended Height	in mm	See Mast Chart		
20	Inside Straddle Width**	In 1" (25 mm) increments	in mm	34 - 50 865 - 1270	
Performance	24	Speed Travel	Power Unit First (E/L)	mph kph	8.0 / 7.2 13.0 / 11.6
			Forks First (E/L)	mph kph	6.8 / 5.7 11.0 / 9.2
	25	Speed Lift - AC†	Empty	fpm mm/s	152 770
			1000 lb (455 kg)	fpm mm/s	136 690
			2000 lb (910 kg)	fpm mm/s	118 595
			3000 lb (1360 kg)	fpm mm/s	103 520
26	Speed Lower	Empty/Loaded	fpm mm/s	110 / 110 555 / 555	
37	Tires	Size - Drive/Caster	in mm	13 x 5.5 / 8 x 4 330 x 140 / 203 x 102	
Chassis	38	Wheelbase (Standard Wheel)	Comp't "B"	in mm	59.32 1505
			Comp't "C"	in mm	61.32 1560
			Comp't "D"	in mm	63.07 1600
			Comp't "E"	in mm	65.70 1670
	39	Suspension	Drive	Articulated	
			Caster	Articulated, Swivel	
42	Brakes	Drive	Elec Release / Mech Applied		
		Caster	None		
		Parking	Elec Release / Mech Applied		
Battery		Battery Removal	Both Sides		
	45	Type	Lead Acid		
	46	Min Weight/Max Amp	Comp't "C"	lb/amp kg/amp	2000 / 930 910 / 930
			Comp't "D"	lb/amp kg/amp	2280 / 1085 1035 / 1085
			Comp't "E"	lb/amp kg/amp	2600 / 1240 1180 / 1240
		Max Battery Size	Comp't "C"	L x W x H	in mm
Comp't "D"			L x W x H	in mm	38.69 x 18.00 x 31 983 x 457 x 787
Comp't "E"			L x W x H	in mm	38.69 x 20.75 x 31 983 x 527 x 787
			Connector Location / Legth (J)	in mm	A / 9
		Standard Connector	SB350 Gray		



\* Contact factory. Capacity may be subject to derating at height.  
 \*\* Inside straddle is decreased by .35" (10 mm) with Quick Change Load Wheels.  
 † Maximum lift speeds with the maximum available battery compartment.

**RD 5700 Series**

**Specifications**

Models RD 5725-32				TT									
Mast	9	Lift Height	in mm	198	5025	210	5330	225	5715	240	6095	246	6245
		Free Lift*	in mm	53	1345	59	1495	66	1675	71	1800	75	1905
	10	Guard Height	in mm	89	2260	95	2415	95	2415	95	2415	95	2415
	17	Overall Collapsed Height	in mm	89	2265	95	2415	102	2590	107	2720	111	2820
	18	Overall Extended Height*	in mm	234	5940	246	6245	261	6625	276	7010	282	7160
		Minimum Straddle OD	in mm	42	1065	42	1065	42	1065	42	1065	42	1065
Weight	Truck Weight w/o Battery			Battery Compartment									
		"C"	lb kg	5815	2645	5925	2695	6092	2770	6238	2835	6336	2880
	RD 5725-32	"D"	lb kg	5857	2660	5967	2710	6133	2790	6280	2855	6380	2900
		"E"	lb kg	5912	2685	6022	2735	6207	2825	6335	2880	6438	2930

Models RD 5725-32				TT									
Mast	9	Lift Height	in mm	249	6320	250	6350	252	6400	270	6855	276	7010
		Free Lift*	in mm	76	1930	76	1930	77	1955	83	2105	87	2205
	10	Guard Height	in mm	95	2415	95	2415	95	2415	95	2415	95	2415
	17	Overall Collapsed Height	in mm	112	2845	112	2855	113	2870	119	3025	123	3125
	18	Overall Extended Height*	in mm	285	7235	286	7260	288	7315	306	7770	312	7920
		Minimum Straddle OD	in mm	42	1065	42	1065	42	1065	42	1065	42	1065
Weight	Truck Weight w/o Battery			Battery Compartment									
		"C"	lb kg	6371	2900	6383	2905	6406	2915	6527	2970	6685	3040
	RD 5725-32	"D"	lb kg	6415	2920	6426	2925	6450	2935	6569	2990	6731	3060
		"E"	lb kg	6471	2945	6482	2950	6503	2960	6624	3015	6767	3080

Models RD 5725-32				TT									
Mast	9	Lift Height	in mm	280	7110	288	7315	296	7515	300	7620		
		Free Lift*	in mm	88	2235	91	2310	94	2385	95	2410		
	10	Guard Height	in mm	95	2415	95	2415	95	2415	95	2415		
	17	Overall Collapsed Height	in mm	124	3160	127	3225	130	3295	131	3330		
	18	Overall Extended Height*	in mm	316	8025	324	8225	332	8430	336	8530		
		Minimum Straddle OD	in mm	42	1065	42	1065	42	1065	42	1065		
Weight	Truck Weight w/o Battery			Battery Compartment									
		"C"	lb kg	6732	3060	6825	3105	6918	3145	7034	3195		
	RD 5725-32	"D"	lb kg	6778	3085	6872	3125	6966	3170	7076	3215		
		"E"	lb kg	6811	3100	6899	3140	6987	3180	7131	3240		

# RD 5700 Series

# Specifications

Models RD 5725-32				TT									
Mast	9	Lift Height	in mm	315	8000	321	8150	324	8230	330	8380	341	8660
		Free Lift*	in mm	102	2590	104	2640	107	2715	109	2765	113	2870
	10	Guard Height	in mm	95	2415	95	2415	95	2415	95	2415	95	2415
	17	Overall Collapsed Height	in mm	138	3505	140	3560	143	3645	145	3695	149	3785
	18	Overall Extended Height*	in mm	351	8915	357	9065	360	9140	366	9295	377	9575
		Minimum Straddle OD	in mm	42	1065	42	1065	49	1245	49	1245	49	1245
Weight	Truck Weight w/o Battery			Battery Compartment									
	RD 5725-32	"C"	lb kg	7139	3245	7211	3280	na	na	na	na	na	na
		"D"	lb kg	7189	3270	7253	3295	7294	3320	7365	3350	7508	3415
		"E"	lb kg	7244	3295	7308	3320	7349	3345	7420	3375	7563	3440

Models RD 5725-32				TT									
Mast	9	Lift Height	in mm	366	9295	372	9450	376	9550	380	9650	400	10160
		Free Lift*	in mm	124	3145	127	3225	128	3250	129	3275	136	3450
	10	Guard Height	in mm	95	2415	95	2415	95	2415	95	2415	95	2415
	17	Overall Collapsed Height	in mm	160	4060	163	4135	164	4165	165	4205	172	4060
	18	Overall Extended Height*	in mm	402	10210	408	10360	412	10460	416	10565	436	11070
		Minimum Straddle OD	in mm	50	1270	53	1345	53	1345	53	1345	53	1270
Weight	Truck Weight w/o Battery			Battery Compartment									
	RD 5725-32	"C"	lb kg	na	na	na	na	na	na	na	na	na	na
		"D"	lb kg	na	na	na	na	na	na	na	na	na	na
		"E"	lb kg	7779	3535	7912	3600	7959	3620	8006	3640	8013	3640

\*With load backrest.  
Above 321" (8150 mm), 6" (150 mm) high load wheel standard.

## RD 5700 Series

## Technical Information

### Capacity

Model RD 5725-32: 3200 lb (1450 kg) at 24" (600 mm) load center, 36 volt

### Batteries

Battery removal from left or right side of truck. Standard battery compartment rollers for extraction with mechanized equipment.

### Standard Equipment

1. Crown's Access 1 2 3<sup>®</sup> Comprehensive System Control
2. 36 volt system
3. AC Traction System
4. AC Hydraulics with electronic power steering
5. OnTrac<sup>®</sup> Anti-Slip Traction Control
6. Operator Compartment
  - Variable side stance
  - Flexible five-point positioning
  - Back support with integral hip support
  - Arm/elbow support padding
  - Padded compartment interior walls
  - Operator console with work surface and storage
  - Suspended floor
  - 270 in<sup>2</sup> (1768 cm<sup>2</sup>) floor area
  - Entry Bar<sup>™</sup> safety switch
  - Premium urethane floorboard cushion
  - Console light
7. Multi-task control handle
8. Crown display
  - Event code display with five (5) key navigation.
  - Hour meters / travel distance / stop watch
  - PIN Code access capable
  - Access 1 2 3 diagnostics
  - P1, P2, P3 performance tuning
  - Battery discharge indicator, steer wheel direction indicator, OnTrac Traction Control indicator
9. High visibility power unit
10. High visibility mast
11. Overhead guard
12. 36" (915 mm) high load backrest
13. Crown-manufactured sideshifter, 2"(50 mm) each way
14. Tilting fork carriage
15. Tandem articulating load wheels

16. Lift slow down 12" (305) from maximum lift height
17. Lift Limit without override
18. Crown-manufactured drive and lift motors
19. Offset articulated drive axle with 190° steer arc
20. Key switch
21. Horn
22. Emergency power disconnect
23. 350 amp battery connector
24. Large diameter battery rollers
25. Color-coded wiring
26. Third post
27. Reverse steering
28. InfoPoint<sup>®</sup> System with Quick Reference Guide
29. Static Strap

### Optional Equipment

1. Rack Height Select and Tilt Position Assist
2. Capacity monitor
3. Camera and color monitor
4. Mast lift heights to 400" (10160 mm)
5. Lift limit with override
6. Drive-in rack cylinder package
7. Drive-in rack mast
8. Drive-in rack third post
9. Chain slack kit
10. Bolt-on outrigger tips
11. Quick Change bolt-on outrigger tips
12. Mesh screen mast guard
13. Battery retainer with interlock
14. 5th battery compartment roller
15. V-Force<sup>®</sup> Lithium-Ion Ready
16. Fuel Cell Ready
17. Thin Plate Pure Lead (TPPL) Ready
18. 42" and 48" (1065 mm and 1220 mm) high load backrests
19. Overhead guard mesh
20. Polished and tapered forks
21. Fork lengths
22. Work lights
23. LED flashing light
24. Floor Spotlight - Blue
25. Keyless on/off switch
26. Fan
27. Corrosion/freezer conditioning (freezer conditioning includes a 5/8" (16 mm) thick power unit skirt with extended coverage of the drive and caster tires)

28. ThermoAssist<sup>™</sup> freezer comfort package ("C", "D" or "E" battery compartment)
29. Load wheel sizes and compounds
30. UL EE Rating
31. Forward Steering
32. Work Assist<sup>®</sup> Accessories:
  - Accessory tube
  - Accessory RF mounting plate
  - Accessory RF mounting bracket
  - Accessory clamp adapter plate
  - Accessory clamp
  - Accessory clip pad
  - Accessory hook
  - Accessory clip pad and hook
  - Accessory pocket
  - Organizer kits
33. InfoLink<sup>®</sup> Ready

### Operator Compartment

Soft, rounded surfaces make compartment interior more comfortable. Streamlined exterior smooths entry/exit for the operator. A low floor height, (9.4" (240 mm)), first greets the operator. A 270 in<sup>2</sup> (1768 cm<sup>2</sup>) floor and patented suspended floorboard provide comfortable footing.

The brake pedal design allows variable side-stance positions for the operator. The operator can change positions to increase comfort and productivity.

Five-point positioning provides control and stability, starting with the right hand on the multi-task controller and the left hand on the steer tiller. Left foot on the brake pedal and the right foot on the presence sensor. The operator's back is naturally fitted against the wrap-around support cushion.

The Entry Bar<sup>™</sup> safety switch with sensors to automatically slow truck travel, encourages safe foot positioning inside the truck.

The multi-task control enables the operator to maneuver the truck while blending lift and accessory functions for improved productivity. Control handle activation forces are reduced. The soft grip steer tiller with electronic power steering reduces operator fatigue.

Operator visibility is improved with:

- Low profile power unit
- High visibility mast
- Angled mast cross bracing
- Angled overhead guard cross bars
- Variable side stance

Superior thermal management is the result of several design features: reduced heat generating components, positioning of heat generating components away from the compartment, padding to insulate the compartment from heat, and improved air paths through the truck.

Clipboard surface and console storage pockets are standard.

### Crown's Access 1 2 3<sup>®</sup> Comprehensive System

**Control** provides optimum performance and control by offering a communication interface for operators and technicians, intelligent coordination of lift truck systems and simplified service with advanced diagnostics.

The Crown display is used for easy trouble shooting, accessing service history and setting performance features. A distribution panel is conveniently located with all test points, control fuses and central wiring for easy troubleshooting.

Three modes of performance can be selected to accommodate operator experience or application requirements.

### OnTrac<sup>®</sup> Anti-Slip Traction Control

Crown's Access 1 2 3 technology monitors truck dynamics, optimizes traction, reduces spinning during acceleration, prevents lock-up during braking, and greatly extends tire life.

### Travel

Crown's AC traction system is a closed loop traction control system that maintains top speed throughout the battery charge. Engineered and manufactured by Crown, the AC motor, controller and drive unit are designed specifically for lift truck applications.

On an inclined surface or when interfacing with push-back racking, the "truck hold" feature electronically brakes the truck when the handle is in neutral. The operator does not have to release the brake pedal, improving comfort and control in these applications. Selected travel speed remains constant regardless of surfaces, load weight or grades. Less throttling of control handle means better truck control and less fatigue to the operator.

**Steering**

The electronic power steering uses an AC steer motor and steering control module integrated with the Access 1 2 3® System to provide fast, reliable steering response.

Smooth, quiet steering control with minimal operator effort required at the steer tiller. Drive tire rotates 190° for maximum maneuverability.

**Braking**

A disc brake on the motor armature shaft combined with motor regenerative braking provides sure braking with fewer parts and maintenance requirements. The offset, articulated drive-unit design improves drive tire brake force.

Regenerative motor braking helps save energy, and decreases motor temperature.

**Suspension**

The offset, articulated drive-unit design provides positive floor contact.

**Load Handling**

The optional load handling assist package provides rack height select and tilt position assist features.

The Rack Height Select feature allows the truck to be programmed to stop at preselected heights. With one-touch of the multi-task trigger while lifting or lowering, the mast will stop at the next programmed height.

Another useful option is the Tilt Position Assist. This allows the fork tilt to stop at a preprogrammed position for maximum fork clearance when entering pallets.

Also optional, the Capacity Monitor shows the approximate weight on the forks and the fork height. It will alert the operator when the truck capacity is exceeded for the fork height. It will also show how high or to which lift zone you can raise the load.

**Mast**

High visibility mast design with angled cross bracing and angled overhead guard braces improve visibility for high or low stacking. Crown's patented staging cushions coupled with lowering dampers and speed reductions at maximum lift improve overall load handling control.

Rolled steel outer channel masts and inner "I" beams roll on canted, steel, anti-friction roller bearings for minimal current draw and long life. Telescoping mast sections nest to reduce truck length. Heavier mast cross bracing design increases stiffness. Above 270" (6860 mm) lift, vertical mast reinforcement maintains maximum capacity.

**Carriage**

A hook-type carriage conforming to ITA specifications is used. Load backrest is standard.

**Warning Device Options**

Audible or Visual Alerts

Safety considerations and dangers associated with audible travel alarms and lights include:

- Multiple alarms and/or lights can cause confusion.
- Workers ignore the alarms and/or lights after day-in and day-out exposure.
- Operator may transfer the responsibility for "looking out" to the pedestrians.
- Annoys operators and pedestrians.

**Other Options Available**

Contact factory for additional options.

*Dimensions and performance data given may vary due to manufacturing tolerances. Performance is based on an average size vehicle and is affected by weight, condition of truck, how it is equipped and the conditions of the operating area. Crown products and specifications are subject to change without notice.*



**Crown Equipment Corporation**  
New Bremen, Ohio 45869 USA  
**Tel** 419-629-2311  
**Fax** 419-629-3796  
crown.com

**You can count on Crown to build lift trucks designed for safe operation, but that's only part of the safety equation. Crown encourages safe operating practices through ongoing operator training, safety-focused supervision, maintenance and a safe working environment. Go to [crown.com](http://crown.com) and view our safety section to learn more.**

Because Crown is continually improving its products, specifications are subject to change without notice.

Crown, the Crown logo, the color beige, the Momentum mark, Access 1 2 3, InfoPoint, InfoLink, ThermoAssist, OnTrac, Entry Bar, V-Force and Work Assist are trademarks of Crown Equipment Corporation in the United States and other countries.

Copyright 2009-2021 Crown Equipment Corporation  
SF18300 Rev. 02-21  
Printed in U.S.A.